



## Land Acknowledgement

The Art Gallery of Burlington is located on the ancestral territory of many Indigenous Nations including the Anishinaabeg, Haudenosaunee, and Métis peoples. The territory is mutually covered by the Dish with One Spoon Wampum Belt Covenant, an agreement between the Iroquois Confederacy, the Ojibway, and other allied Nations to peaceably share and care for the resources around the Great Lakes. We acknowledge that the land upon which we gather, to create and learn, is part of the Treaty Lands and Territory of the Mississaugas of the Credit First Nation.

## Who We Are

We are a place of intersection where creators, cultures and communities meet and share in the wealth of human creativity. At the Art Gallery of Burlington, we pride ourselves on delivering thought-provoking exhibitions and engaging public programs. Our Gallery is home to the world's largest collection of contemporary Canadian ceramics, which serves as a cornerstone for our exhibitions and educational initiatives. We offer a unique perspective that challenges traditional boundaries and encourages new ways of thinking and creating.



## Table of Contents

Message from Chair of the Board | **4**

Message from the Executive Director | **5**

Message from the Artistic Director & Curator | **6**

Exhibitions | **7–13**

Collections | **14–15**

Focus on Sustainability & Environment | **16**

2024 at a Glance | **17**

Programs | **18–21**

*REVEL24* | **24–25**

AGB Shop & Venue Rentals | **26**

Philanthropy | **27–29**

Our People | **30–33**

Financials | **34–35**



## Message from the Chair of the Board

Dear Supporters and Friends,

On behalf of the Board of Directors of the Art Gallery of Burlington, I am pleased to share our 2024 Impact Report—a reflection of the milestones we’ve achieved together in our pursuit of creativity, community, cultural engagement, and fiscal responsibility.

Over the past year, AGB has grown not only in numbers and programming, but in vision. We have strengthened our governance, elevated our commitment to equity and inclusion, and prioritized the modernization of our facility through the initiation of a bold feasibility study that will guide our transformation over the next decade.

The accomplishments highlighted in this report are a direct result of the passionate leadership of our staff, the dedication of our partners and volunteers, and the unwavering support of our community. As Burlington continues to evolve, so does AGB’s role in shaping a city defined by creativity, dialogue, and shared experiences.

We are proud of what we’ve achieved—and even more excited for what lies ahead as we celebrate our 50th Anniversary year. Thank you for standing with us.

Sincerely,

**Natasa Veljovic**

**Chair, Board of Directors**



## Message from the Executive Director

Dear Friends,

It is with deep gratitude and great excitement that I share with you our **2024 Impact Report**. This year has been a remarkable chapter in our ongoing evolution—a year marked by creativity, growth, and a renewed sense of purpose as we continue to serve as a cultural cornerstone in Burlington and the surrounding region.

At AGB, we believe in the power of art to inspire change, build community, and foster understanding. Over the past year, we have expanded access to meaningful arts programming for people of all ages and backgrounds. Through hands-on learning, inclusive exhibitions, artist residencies, and community partnerships, we have brought people together to learn, see, think, and make. We have prioritized youth and family engagement, centered diverse voices, and strengthened our focus on environmental responsibility and mental wellness through the arts.

One of our most exciting initiatives in 2024 has been the launch of the **Facility Master Plan and Future Needs Feasibility Study**. This project is a bold step toward transforming our physical space to meet the growing needs of our audiences and artists. It represents our commitment to a future that is inclusive, accessible, and innovative—one that honours our legacy while embracing new possibilities.

Our vision is clear: to be a place where creators, cultures, and communities intersect in meaningful and lasting ways. This report highlights the strides we've made and the impact of your ongoing support. Thank you for believing in the AGB and joining us on this transformative journey.

With appreciation,  
**Emma Sankey**  
Executive Director



## Message from the Artistic Director & Curator

In 2024, the AGB leaned into the language of craft to explore the emotional landscape of belonging and the environmental contexts of home. Through our exhibitions and programs, artists examined the bonds between people and place, engaging with material histories, Indigenous knowledges, and the impacts of the Anthropocene.

This year's programming highlighted the radical potential of craft, presenting artists whose work weaves together transnational narratives through clay, textiles, painting, and writing. From David R. Harper's meditations on stillness to Alize Zorlutuna's reflections on waterways, our galleries became spaces for deep engagement and experimentation.

AGB served as a vital incubator, offering artists the time, space, and technical support to push their practices forward. Through residencies, commissions, and guest-curated exhibitions, we supported both emerging and established artists in developing new directions and amplifying their voices.

Our commitment to lifelong learning remained central. We hosted hands-on workshops and courses that deepened participants' connection to craft and supported professional growth. From fermentation to ceramics, these offerings helped us understand contemporary art through tactile, shared experiences.

We also saw a resurgence in youth and family engagement, with participation in camps and school programs exceeding pre-pandemic levels. The launch of our Youth Council created space for younger voices, ensuring the Gallery reflects their interests and values.

At AGB, learning is in the making—and making is how we build community. Thank you to the artists, educators, cultural workers, and partners who energize our studios. Together, we're shaping a future where craft is not only a practice but a way to connect, reflect, and act.

Warmly,  
**Suzanne Carte**  
Artistic Director & Curator

## Exhibitions

January 19, 2024—April 7, 2024

***Stockroom***

**Jeremy Laing**

January 19, 2024—April 28, 2024

***How can I know you?***

**KC Adams, Anong Beam, Panya Clark  
Espinal, Melissa General,  
Dana Prieto, Krista Belle Stewart**

April 13, 2024—June 23, 2024

***Destroyer***

**Jagdeep Raina**

May 10, 2024—September 1, 2024

***We Who Have Known Many Shores***

**Alize Zorlutuna**

June 29, 2024—October 6, 2024

***Exchanging Presence***

**Magdolene Dykstra**

September 20, 2024—January 5, 2025

***MIDNIGHT***

**David R. Harper**

October 12, 2024—January 5, 2025

***WonderRoom***

**Permanent Collection**

ALIZE ZORLUTUNA, *WE WHO HAVE KNOWN MANY SHORES*, DETAIL. ART GALLERY OF BURLINGTON, 2024,  
PHOTO CREDIT: ROYA DELSOL.





*HOW CAN I KNOW YOU?*, ART GALLERY OF BURLINGTON. 2024. PHOTO CREDIT: ROYA DELSOL.

**January 19—April 28, 2024**

***How can I know you?***

**KC Adams, Anong Beam, Panya Clark Espinal, Melissa General, Dana Prieto, Krista Belle Stewart | Suzanne Morrisette, Curator**

Using materials sourced from the earth, the artists in *How can I know you?* worked to share site-specific knowledge about kinship and generational relations, industry and settlement, social and political histories tied to settler nationalism and institutions, and Indigenous territories in dialogue with one another. This question guided the exhibition with a suggestion that the way we learn imparts an opportunity of acquaintance with possibility. It suggested that one's approach to getting to know someone, or something, can influence the nature of that future relationship and the degree to which we are able to acknowledge and validate that which lies outside of our own experiences.



ALIZE ZORLUTUNA, *WE WHO HAVE KNOWN MANY SHORES*. ART GALLERY OF BURLINGTON, 2024. PHOTO CREDIT: ROYA DELSOL.

**May 10—September 1, 2024**

***We Who Have Known Many Shores***

**Alize Zorlutuna | Suzanne Carte, Curator | SF Ho, Writer**

*We Who Have Known Many Shores* brought together material practices rooted in Anatolian textiles, ceramics, and marbling, with contemporary mediums, to forge new directions for considering diasporic relationships to place and belonging. For their first solo exhibition in a public art gallery, Zorlutuna explored ancestral material practices through contemporary means, reconnecting threads that have been severed through displacement, and imagining what healing might look like for those who have been separated from their homelands.



DAVID R. HARPER, *MIDNIGHT*, ART GALLERY OF BURLINGTON. 2024, PHOTO CREDIT: JIMMY LIMIT.

September 20, 2024—January 5, 2025

## ***MIDNIGHT***

**David R. Harper | Suzanne Carte, Curator**

David R. Harper's exhibition *MIDNIGHT* was a profound exploration of stillness rendered in material form, including glasswork, weaving, embroidery, and a monumental installation of more than 10,000 ceramic birds, culminating Harper's nine-year meditation on a single form. His repeated construction of the birds allowed him space to process the weight of time, and the relationship between accumulation and deterioration. Truly awesome in its detail, scope, and scale, Harper's approach yielded an elegant narrative on grief, belonging, beauty, angst, and longing.



JEREMY LAING, *STOCKROOM*, ART GALLERY OF BURLINGTON. 2024. PHOTO CREDIT: ROYA DELSOL.

January 19—April 7, 2024

## ***Stockroom***

**Jeremy Laing | Suzanne Carte, Curator**

Jeremy Laing created incidental and non-hierarchical narratives with unconventional and underappreciated material. *Stockroom* pulled from hidden spaces—back rooms, storage spaces, depositories—where one stores or ignores the archive. It displayed a dormant and forgotten hiding place for everyday things that are to be disregarded but not discarded, the things that are outdated but not obsolete—a transcendental space where objects emerge from sanctioned futility to be rearticulated in the now.



JAGDEEP RAINA, *DESTROYER*, ART GALLERY OF BURLINGTON, 2024, PHOTO CREDIT: ROYA DELSOL.

**April 13—June 23, 2024**

***Destroyer***

**Jagdeep Raina | Jasmine Mander, Curator | Karishma D’Souza  
& Uzma Falak, Writers**

Jagdeep Raina’s exhibition *Destroyer* was a dramatic mise-en-scène featuring a selection of artworks including recent ceramics, embroidered tapestries, works on paper, and poetry. The carefully composed set drew inspiration from Dal Lake, the second largest body of water in Kashmir, and the most visited place in Srinagar by tourists and locals. Raina uncovered the harsh colonial ties to this coveted place and the resulting loss of local traditions over time.

“Through this exhibition, I aim to unravel the complex layers of history, displacement, and resilience woven within the fabric of Dal Lake,” Raina says. “*Destroyer* serves as a lens to examine the interplay between colonial legacies and contemporary realities.”



MAGDOLENE DYKSTRA, *EXCHANGING PRESENCE*, ART GALLERY OF BURLINGTON, 2024, PHOTO CREDIT: JIMMY LIMIT.

**June 29—October 6, 2024**

***Exchanging Presence***

**Magdolene Dykstra**

Suzanne Carte, Curator | Jasmine Mander, Programmer

*Exchanging Presence* brought together two of Magdolene Dykstra’s ongoing projects—*Gathering Presence* and *Exchanging Presence*. Together, these works ask what it means to be seen and to what degree one wants to make themselves visible.

Dykstra describes the mark-making process as a “practice that blends references to Colour Field painting and cave paintings. Just as prehistoric artists recorded their presence using pigments of the Earth, my finger paintings record my presence with a simple, yet persistent gesture.” Her mark-making—fingerprints, using soil, clay, and naturally occurring oxides—is simultaneously individual and universal among all humans. It asserts her right to take up space in a nation that has historically favoured people of European descent through its policies. The individual marks on the wall and in clay are small, but in unison, they are grand.

“By repeatedly recording our presence on the gallery walls, this site-specific painting becomes an act of shared presence and persistent resistance—stating over and over again, I am here; we are still here.”

## 2024 Acquisitions

KC Adams, *Clay Vessel*, 2023. Hand built clay, coil method, pit fired, grandfather rocks. 2024.001.0.6. Purchased through a donation from Bonnie Sylvia, 2024.

Jack Sures, *Vessel*, 1980. Thrown and carved porcelain, glazes. 2024.002.0.1. From the collection of Gregory Williams, 2024.

Jack Sures, *Vessel*, 1990. Thrown and carved porcelain, glazes. 2024.003.0.1. From the collection of Gregory Williams, 2024.

Mary Philpott, *Triptych*, c.2006. Hand drawn, carved, molded, pressed porcelain, glazes. 2024.004.0.3. Donated by the Hayes Family, 2024.

Ruth Paynter, *Vase*, c.1950-1960. Slip cast, glazes. 2024.005.0.1. Donated by the Hayes Family, 2024.

Ruth Paynter, *Stopped Bottle*, c.1950-1969. Slip cast, glazes, cork stopper. 2024.006.0.1. Donated by the Hayes Family, 2024.

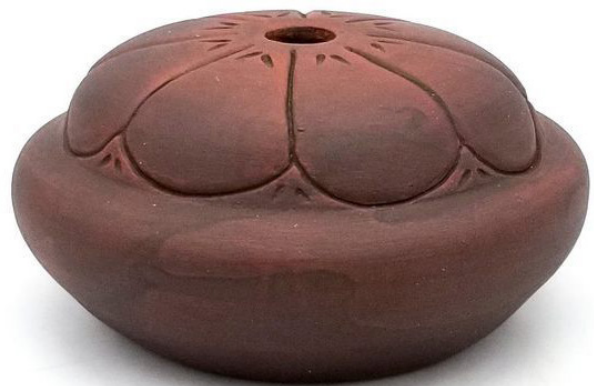
Santhony Pottery, *Seed Pot*, 2023. Clay, incised design. 2024.007.0.1. Donated by Santhony Pottery, 2024.

Santhony Pottery, *Bud Vase*, 2018. Clay, incised design, glaze. 2024.008.0.1. Donated by Santhony Pottery, 2024.

Madeleine Lesage, *Figure with Infant*, c.1980. Earthenware, paint. 2024.009.0.1. Donated by Diane Schincariol, 2024.

Madeleine Lesage, *Figure*, c.1980. Earthenware, paint. 2024.010.0.1. Donated by Diane Schincariol, 2024.

THIS PAGE: SANTHONY POTTERY, *SEED POT*, 2023. CLAY, INCISED DESIGN. 2024.007.0.1. DONATED BY SANTHONY POTTERY, 2024.  
FACING PAGE: *HOW CAN I KNOW YOU?* DETAIL. KC ADAMS, *NIBI*, 2023. SEVEN INDIGENOUS CLAY VESSELS, SEVEN RED WILLOW WREATHS, MIDI SOUND EQUIPMENT. PHOTO CREDIT: ROYA DELSOL.



Through a recent permanent collection audit and redirection, we are applying a strategic growth plan to build a contextualized, reflexive practice for how core collections management standards are conceptualized, renegotiated, and enacted. Currently AGB's Indigenous collection of belongings and sculptures represent less than 1% of the overall permanent collection; therefore, we are prioritizing research and acquisition of First Nations, Inuit, and Métis work directly from artists and relation-makers.

AGB purchased our first living vessel in the collection from KC Adams' Nibi installation exhibited in *How Can I Know You?* The vessel is part of her ongoing investigations into Indigenous history, ancestral knowledge, generational exchange, and personal memory through clay. The acquisition came with changes to the ways we handle artworks in our care. In consultation with Adams, we put policies in place to respect the needs of ancestral belongings, knowledge systems, and community protocols, so that her work and future living acquisitions can be removed from the Gallery to be used by local Nations in ceremony.

We regularly rotate works from the collection throughout the building whether it is in response to artists' work in the programming year, highlighting recent acquisitions, featuring local artists, or building thematic relations with artworks AGB strives to have the collection visible and active. The Collection Corridor began the year with *All in the Family*, showcasing work by 12 families of ceramists in the collection together. In the summer we hosted FUSION's travelling exhibition, *Breakthrough Plus*, which celebrated their 50th anniversary. Juried by Suzanne Carte and Peter Flannery, of the Canadian Clay and Glass Gallery, the loan featured new works by 33 ceramic and glass artists from across Canada. The year ended with *Beyond Borders* which highlighted a selection of ceramists who have contributed to the dissemination of contemporary Canadian ceramics through teaching, mentoring, and exhibiting beyond our national borders.



## Focus on Sustainability & Environment

Located on Treaty 3 <sup>3</sup>/<sub>4</sub> Territory we are guided by Nations of storytellers—the Anishinaabeg, Haudenosaunee, Inuit, and Métis peoples—who emphasize the principles of sustainability and reciprocity with the natural and non-human world. AGB acknowledges that responsible consumption and sustainable art practices are rooted in Indigenous knowledge systems, which value our relationship to natural resources and the land and fosters circular economies where materials are reused, and waste is minimized.

We honour this ethos by using reclaimed materials in exhibition making and our studio practices, directly addressing pressing environmental concerns. AGB encourages conversations with the public and artists on how we can better live in our cities and provide barrier-free cultural services to all without waste.

The Artist Material Fund (AMF) is a material relocation service that diverts usable waste from the arts and culture sector and provides it to the public for free. AGB activates this program twice a year with community partners such as Evergreen Brickworks, OCADU, and BurlingtonGreen. AMF's goal is to revolutionize the way galleries and museums handle waste and offer a viable alternative to the ecological irresponsibility of exhibition-making and addressing the fiscal precarity of artmaking.

Our efforts to promote sustainability in our own studios include implementing hand bins and towels for washing up instead of continuous water usage, installing scrap collection bins in all education studios to divert reusable waste, maintaining a dump glaze in the ceramic studio for end-of-life glazes, and launching the Take and Make Cart to redistribute useable art materials to the public.

In 2024, AGB phased out single-use plastics, including acrylic paints, in our programming and banned other harmful materials, like barium, cadmium, and lead from our studios altogether. We use recycled clay for children's and outreach programming and have shifted to processed-based clay programs, limiting pottery students' firings. As we plan ahead, we continue to conduct research into additional sustainable alternatives and integrate discussions about sustainability into our educational platform.



# 2024 at a Glance

2024 at AGB was a rewarding, stimulating, and special year of creativity, connections, and community—and equally a year of collective learning. As we reflect, we want to thank all the people we call community, including artists, staff, donors, cultural partners, volunteers, and most importantly you.

30,000+  
visitors



780+  
AGB  
Members

Reclaimed 2,000 pounds of clay  
(estimated)



148 volunteers

3,233 children and youth  
in educational programs

24 clay Workshops

2,436 students from  
Kindergarten to Grade 12

27 courses



66 school  
visits



9 new pieces in our Permanent Collection

37

Community  
Collaborators  
and Partners

32

Family Open  
Studios

9

Weeks of  
Camp for 3  
age groups

8

Exhibitions

10,000

Ceramic Birds



SOLAR ECLIPSE DURING PA DAY CAMP, ART GALLERY OF BURLINGTON. 2024. PHOTO CREDIT: EMMA SANKEY.

## Programs

Through hands-on programs, community gatherings and lively conversations, programs at AGB invite audiences to deepen their relationships with art and the world it represents. We collaborated with dynamic and inspiring artists to create experiences for people of all ages, from artist-led workshops and talks to exciting family programs and camps.

We were privileged to work with artists KC Adams and Dana Prieto in concert with their exhibited works in *How can I know you?* to deepen our understanding of earth-based materials through hands-on workshops hosted by both artists. With KC Adams, we learned about the time-honoured traditions of clay cooking vessels in Indigenous cultures and how to adapt clay bodies with grandfather rocks and other materials to create vessels fit for open fires, while Dana Prieto taught an appreciation of the colours found in our soil to create unique crayons. Alize Zorlutuna similarly drew upon their intimacy with the land and their Turkish traditions to host two memorable workshops in paper marbling and natural dyes.

These artist-led experiences, informed by the land and its many lessons, reverberated through all areas of our public programs, from school visits to family programs and children's camps. Family holiday programs invited children and their caregivers to explore materials and processes revealed through our exhibitions, and closer attention to the environmental impact of our activities has guided our decision to reduce the use of single-use plastics in our camps and children's programs as the first steps towards a more sustainable future for art education.

## Artist-instructor Highlights

### **Neslihan Atay**

A longtime Conservatory volunteer and Burlington Potters Guild member, Neslihan Atay took over the wheel of our popular Build-A-Bowl workshops in 2024. As well as introducing many beginners to wheel throwing, Nesli has developed new short courses that take students through all the stages of creating functional bowls on the wheel.

### **Rose Senat**

We were thrilled to welcome Rose Senat to our team of talented Summer Camp instructors this year, making her debut teaching several weeks of camp across age ranges, including the new Portfolio Development Camp for teen artists preparing for future careers in art.

## Learning

At AGB classes and workshops encourage interdisciplinary production with a diverse range of artists whose teachings are based in global and traditional practices. We attuned our programming to respond to the shifting demographics in our region and collaborate with artists and cultural producers who connect big ideas to the articulated needs of our communities. In addition to sustaining our community's interest in learning the fundamentals of wheel throwing, weaving, painting, and other art forms, we introduced new Radical Darkroom workshops with Sonya de Laat to explore the creative potential of using darkroom chemistry and found materials to create abstract photographic images.

Our Family Open Studios continued to be a regular outing for local families to come together for relaxing and inspiring afternoons of art-making at AGB, with many other occasions for family-focused art activities arising around the holidays as well as through our partnerships with the Burlington Waterfront Sculpture Trail, Halton Equity Diversity Roundtable, Burlington Heritage Week, and Doors Open. Over 1,430 people of all ages joined us for family programs in 2024, marking another milestone in our continued engagement with our growing community.

This growth was reflected in our school visits program as well, which more than doubled its attendance over the previous year to welcome 2,436 students from kindergarten to grade 12 to the AGB for exhibition tours and studio activities in 2024. Meeting this growing demand for on-site learning experiences resulted in an accompanying growth of our instructional team, allowing us to welcome new artists and voices into AGB's growing community of creative leaders.

## The Living Lab

February 2, 2024–January 12, 2025

***Living Lab: The place as an object and the object as a place***

**José Luis Torres**

The Living series connects artists with community organizations and individuals to exchange knowledge, experience, and ideas in a supportive environment. In 2024, artist José Luis Torres presented *The place as an object and the object as a place*, using provisional materials, to create an interactive space reminiscent of a cabinet of curiosities. This year-long experiment included workshops, talks, and demonstrations, inviting community participation.

Over the course of the year community organizers, artists, activists, and orators hosted a series of workshops, talks, craft-circles, demonstrations, and manifestations to contribute objects that became an integral part of the expanding assemblage.

Stories were shared and stood as a living testament to the ever-evolving convergence of art, knowledge, memory, and imagination. The artist would like to acknowledge the generous support of the Canada Council for the Arts and the Conseil des arts et des lettres du Québec. The Art Gallery of Burlington is grateful for the generous support of incite Foundation for the Arts.



CHARLIE STAR, ASTROLOGY WORKSHOP: HOW TO READ YOUR BIRTHCHART, *LIVING LAB*, ART GALLERY OF BURLINGTON, 2024. PHOTO CREDIT: JASMINE MANDER

## Outreach Into Community

Each year, we engage in collaborations with numerous community organizations to host workshops, exhibitions, and community events. We sustained our successful *Reclaiming Clay* program with Joseph Brant Hospital's Mental Health Inpatient program and explored the creative re-use of everyday waste in our *Reclaiming Trash* workshops with BurlingtonGreen. We welcomed young artists from ArtHouse Halton into AGB studios for a new series of four-week art workshops throughout the year. In our new partnership with Acclaim Health, we took our art instructors into their Burlington club facility to provide hands-on art experiences for people living with dementia, helping to cultivate improved mental health, creativity, and memory among our participants.

A busy summer season sent AGB out into the community for family-friendly events such as Imagine in the Park, Canada Day at Spencer Smith Park, and the Telling Tales Festival, while also welcoming campers from the Canadian Caribbean Association of Halton and Joseph Brant Museum into the Gallery for Summer Camp partnerships.

These collaborations amplify our outreach and underscore our dedication to engaging communities and fostering inclusive artistic endeavours that resonate across diverse demographics.

## Youth Council Fostering Intergenerational Connection Through Art

Launched in 2024, AGB Youth Council aimed to build bridges across generations and nurture collaborative, art-based thinking. The inaugural cohort began their journey with a creative workshop led by visiting artist Charlie Star, during which members designed personalized collage covers for their sketchbooks and set intentions for the months ahead.

As part of its commitment to youth engagement, AGB introduced Youth Council members to curatorial practices by exploring opportunities for collaboration in program development. In parallel, Council members were invited to attend select staff and leadership meetings—offering valuable insight into the operations of a non-profit arts organization. These initiatives reflected the Gallery's investment in mentoring and empowering the next generation of cultural leaders.



COCKTAILS IN THE COURTYARD, ART GALLERY OF BURLINGTON. 2024. PHOTO CREDIT: NATALIA PARRAGA

## Celebrating Community Through Events

In 2024, we offered a variety of events that invited guests to connect with one another and experience the spaces of AGB in new and meaningful ways. Thanks to the generous support of our community, these gatherings helped us continue to offer free admission to AGB exhibitions year-round and champion accessible art in Burlington. We are deeply grateful for the incredible network of supporters who make AGB a vibrant hub of creativity, connection, and inspiration.

We kicked off the summer with the inaugural **Cocktails in the Courtyard**, bringing people together in the scenic Dan Lawrie Family Courtyard to enjoy refreshing cocktails, a curated music set by Cindy AO, and a silent auction featuring works from the collection of Joan Bennett and the AGB Shop.

In December, we closed the year with our **Soup Bowl** luncheon. The Gallery was filled with warmth and community spirit as guests savoured hearty soups, fresh salads, and sweet treats from local restaurants. Attendees selected from a beautiful array of handcrafted bowls made by members of the Burlington Potters Guild and decorated by artists from the Burlington Fine Arts Association.

Both events were made possible through the enthusiastic participation of our guests, the dedication of our volunteers, and the generosity of local restaurants and sponsors. Their contributions brought people together, supported the arts, and reinforced AGB's role as a welcoming space for all.



CLOCKWISE FROM LEFT:  
 1 & 2. SOUP BOWL, ART GALLERY OF BURLINGTON. 2024. PHOTO CREDIT: NATALIA PARRAGA  
 3. FALL RECEPTION, ART GALLERY OF BURLINGTON, 2024, PHOTO CREDIT: ROYA DELSOL.  
 4. COCKTAILS IN THE COURTYARD, ART GALLERY OF BURLINGTON. 2024. PHOTO CREDIT: NATALIA PARRAGA.

# REVEL24: The Ultimate Art Bash

REVEL, AGB’s signature annual fundraiser, returned for its second year with *REVEL24: The Ultimate Art Bash*—a dynamic celebration of art, community, and creativity. We are proud to report that the event was a resounding success, raising over **\$98,000 net** in support of the Gallery and its year-round programming.

The evening was infused with the vibrant energy of art and music, setting the tone for a memorable experience. Guests arrived in expressive attire, walking the red carpet in true REVEL spirit. Thoughtfully crafted cocktails, distinctive culinary offerings, and an electric atmosphere made the night unforgettable.

This remarkable achievement was made possible through the generous support of our sponsors, donors, and attendees. We extend our heartfelt thanks to everyone who helped make REVEL24 such an inspiring and impactful evening.

## A Special Thank You to Our Artists:

### Visual Artists

Lauren Pirie  
 Amanda McCavour  
 Sabrina Ratté  
 Adrien Crossman  
 Arjun Lal  
 Ardyn Gibbs  
 Angie Faye  
 Nathan Eugene Carson  
 Dominic Pinney

### DJs

Cindy AO  
 Valeroo  
 Sahra Soudi

*REVEL24*, ART GALLERY OF BURLINGTON. 2024. PHOTO CREDITS: THIS PAGE LEFT: ERIC LALLOUET THIS PAGE RIGHT: ERIC LALLOUET FACING PAGE: ZILE LIEPINS





---

Over \$98,000 raised to support programming at the Art Gallery of Burlington!

---

500+ guests

---

3 DJs Spinning

---

9 REVEL24 specific art installations

3 unique bars, with handcrafted cocktails, tasty spirits, fine wines, and local beers

---

9 spectacular food stations



---

8 special experiences won at our Live Auction

---

18 Incredible Silent Auction Prizes

---



DAVID THAI, BOUNTIFUL SERIES STUDIES, AGB SHOP. 2024. PHOTO CREDIT: ROYA DELSOL.

## AGB Shop

Showcasing work by over 100 talented Canadian artists, the AGB Shop has something special for everyone! Guests can discover breathtaking paintings, unique jewellery, ceramics, wood, glass, and gifts for the home.

Art Sales and Rentals in the AGB Shop support emerging and established Canadian artists—many who are local to Burlington and the surrounding area. In 2024, the Art Rental program focused on providing increased visibility to our artists through outreach to corporations, interior designers, and films and staging enterprises.

The AGB Shop is thankful for its 25 knowledgeable volunteers, some of whom have been with the Gallery for over 20 years. Every purchase, whether a painting or a greeting card, supports talented artists and AGB's exhibitions and programs.

## Venue Rentals Connecting Community

In 2024, we were delighted to host you, welcoming groups for weddings, showers, meetings, and other special events throughout the year.

Our venue spaces are the ideal setting for inspired events, both formal and informal, from small groups to major gatherings. Venue rentals play a critical role as a revenue source for AGB, and we are thrilled to share and transform our venue spaces for you. With a central location in downtown Burlington on the shore of Lake Ontario, AGB continues to grow with our community.

# Philanthropy

## Donors

### \$50,000 +

Anonymous Donor

### \$10,000 +

Susan Busby  
Anonymous Donor

### \$5,000 +

Louise Cooke  
Don & Wendy Smith

### \$1,000—4,999

Joan Bennett  
Scott Cooper  
Jeff Martin  
Robert Pring  
Robert Redhead  
& Pamela Lavery  
Emma & Mike Sankey  
Allen Taylor

### \$500—\$999

Stephen Chen  
Lois Crawford  
Mariana Di Rezze  
Vida Kelly  
Monica Lambeck  
Anne North  
James Richardson  
Arna Suddaby  
Patricia Turner  
Natasa Veljovic

### \$100—\$499

Omotayo Adedayo  
Suzanne Alberga  
John Arnold  
Ortwin Baldauf  
Maureen Barry  
Kathryn Gaye Barter  
Martha Bauer  
Norma Brown  
David & Dianne Conrath

Chris & Paul Cropper  
David Currey  
Susan Dzida  
Jennifer Earle  
Nizar Esmail  
Thomas Faguy  
Barbara French  
Lori Gardner, in memory of  
William (Bill) Stevens  
Joan Gladwell  
Patricia Harrison  
Maureen Healey  
Steven Heinemann  
Lynda & Dennis Jones  
Margaret Jones  
Beata Latanska  
Sylvia Lennon  
Kathryn Maudsley  
Christina Moskal  
Howard & Linda Rafuse  
Finn Saevil  
Monika Schaefer  
John Sheepy  
Sheila Sheffield  
Arlene & Robert Singer  
Catherine Thomson  
Magali Vrillaud  
Denise Walker  
William Wallace  
June & Tod Wright  
Julia Yousie  
Dan Yuzwa  
Peter Zevenhuizen  
Belinda Zylstra  
& Mike Winward

## Gifts in Kind

### Soup Bowl Potters

Nelishan Atay  
Jane Cheng  
Mary Goh  
Greg Marshall  
Sherry McFarlan  
Joanne Paas

## Soup Bowl Art

Nuria Cuerva Lopez &  
daughter  
Margaret Dent  
Deena Errampalli  
Cecily Flemming  
Tamara Kwapich  
Karen Logan  
Dominique Prevost  
Lydia Swanson  
Diana Tuszyński  
Nikola Wojewoda  
Joanna Zakrzewski

## Permanent Collection Donations

Jeremy Hayes  
Cindy Henhawk  
Diane Schincariol  
Warren Sorensen  
Bonnie Sylvia

## Funding Partners— Government Supporters

### Federal

Canada Council for the Arts  
Department of Canadian  
Heritage  
Employment and Social  
Development Canada

### Provincial

Ontario Trillium Foundation  
Ontario Arts Council

### Municipal

City of Burlington  
Halton Region Community  
Investment Fund

## Foundations

J.P. Bickell Foundation  
 Burlington Community Foundation  
 Hamilton Community Foundation  
 The Herb & Cece Schreiber  
 Family Foundation  
 incite Foundation for the Arts  
 JTC Heersink Foundation  
 LKH Spirit Fund  
 Pieczonka Family Foundation

## Corporate Sponsors

### \$25,000 +

Alinea Land Corporation

### \$10,000+

RBC Dominion Securities

### \$5,000 +

Structured Creations  
 Rotary Club of Burlington Lakeshore  
 TD Bank Group  
 Veeva  
 Winning & Associates

### \$2,500+

Bozek Milligan Orthodontics  
 Burlington Pediatric Dentistry  
 Centro Garden  
 Conrad Zurini, RE/MAX Escarpment  
 Danyliw & Mann Professional Corporation  
 Gunther Mele  
 Hilary Prins, Royal LePage Burloak  
 Joe Apps Technology Support  
 Joelle's and Jeff's Guy Shop  
 Lawrie Insurance Group  
 Mattamy Homes  
 Minty Gold & Silver Exchange  
 Mosaic Growth Partners  
 Ritestart  
 Sheehan's Truck Centre  
 Simpson Wigle Law LLP  
 Smith's Funeral Home  
 Specs on Pearl  
 Tansley Woods Dentistry

### \$1,000 +

The Lord Nelson  
 Burlington Nissan  
 Burlington Toyota  
 Burgess Law Office  
 Dodsworth & Brown Funeral Home  
 SB Partners

## Corporate Member

DJB Chartered Professional Accountants

## Gifts In-Kind

The Pearle Hotel & Spa  
 NRG Lites  
 Arterra Wines Canada  
 Maverick Distillery  
 Special Event Rentals  
 Burlington Today  
 The Wandering Locavore  
 Radius Burlington  
 Spencer's at the Waterfront  
 Yellow Robot  
 aēras water  
 About Signs  
 Bardō on Brant St  
 Craig's Cookies Burlington  
 Delixir  
 Fairweather Brewery  
 The Lord Nelson  
 Millcroft Catering  
 Pepperwood Bistro  
 Christy's Gourmet  
 Creature Comforts  
 Terra Greenhouses  
 Barbet  
 Nickel Brook Brewery  
 Nothing Bundt Cakes  
 Raw Roots  
 Son of a Peach Pizzeria  
 The Sunshine Doughnut Co.



**780+**  
**Members**  
**in 2024!**

FALL RECEPTION, ART GALLERY OF BURLINGTON, 2024, PHOTO CREDIT: ROYA DELSOL.

## Members

The Art Gallery of Burlington is a gathering place for experiences, ideas, and learning. Our Members are a vital part of our community, as our most steadfast and dedicated supporters. We are deeply grateful for their ongoing support for our mission, as they help us foster an accessible hub for people from diverse backgrounds to gather and connect.

## Endowment Fund

The Art Gallery of Burlington Fund at Burlington Foundation was established over 20 years ago with a noble purpose—to create a long-term, sustainable source of revenue for AGB, enabling us to serve the community with even more outstanding dedication and passion. The fund is utilized to support various education programs, exhibitions, and Gallery initiatives, and as a result, the entire community benefits from it.

Burlington Foundation is devoted to advancing the well-being of our community and its residents. You can support the AGB Fund at Burlington Foundation by giving through the Burlington Foundation website or contacting us to learn more.

If the arts and public art galleries hold significance for you, please consider making a planned gift to Art Gallery of Burlington. Your legacy can ensure that the beauty and inspiration of the arts continues to enrich the lives of future generations. **Please contact Sarah Miserere, Manager of Development and Communications at [sarah@agb.life](mailto:sarah@agb.life) for further information.**



49TH ANNUAL GENERAL MEETING, ART GALLERY OF BURLINGTON. 2024. PHOTO CREDIT: JESSICA GENERALOVIC.

## Our People

### Board

Natasa Veljovic | Chair  
 Dan Lawrie | Vice Chair  
 John Arnold | Treasurer  
 Tracy King\* | Secretary  
 Susan Busby | Past Chair

Directors |

Vickram Agarwal\*  
 Michael Ajise\*  
 Scott Cooper\*  
 Lisa Kearns, Burlington City

Councillor

Juliette Prouse\*  
 Gennile Thomas-Smith\*  
 Diana Tuszynski  
 Garratt Wootton

#### ***Thank you retiring board members:***

Julia Yousie |  
 Vice Chair & Treasurer  
 until June 2024

Jeff Martin |  
 Vice Chair & Secretary  
 until June 2024

### Committees

#### **Development & Fundraising Committee**

Garratt Wootton |  
 Committee Chair

Members |

Vickram Agarwal\*  
 Susan Busby  
 John Doyle  
 Marg Jones  
 Dan Lawrie  
 Pat Shanahan\*  
 Gennile Thomas-Smith\*  
 Diana Tuszynski

#### **Governance & Nominating Committee**

Committee Chair |  
 Susan Busby  
 Julia Yousie\*

Members |

Scott Cooper\*  
 Tracy King\*  
 Natasa Veljovic

#### **Finance & Audit Committee**

Committee Chair |  
 John Arnold  
 Jeff Martin\*

Members |

Michael Ajise\*  
 Juliette Prouse\*  
 Natasa Veljovic

#### **Facilities Planning & Development Taskforce**

Natasa Veljovic |  
 Committee Chair

Members |

Susan Busby  
 Tim Commisso  
 Dan Lawrie  
 Patricia Roy  
 Darren Sanger-Smith  
 Peter Van Kessel

#### **Revel Committee**

Tracy King |  
 Committee Chair

Members |

Jennifer Bozek  
 Susan Busby  
 Kimberly Calderbank  
 Gregory Fast  
 Joelle Goddard-Cooling  
 Vicki Dillane  
 Leslie Edwards  
 Pat Shanahan  
 Sandra Shorer

## **Permanent Collection Committee**

Christopher Reid Flock

Susan Card

Jonathan Smith | Curator Emeritus

Heidi McKenzie

Diana Tuszynski | AGB Board Representative

Suzanne Morrissette

Lindsay Montgomery

## **Staff**

Emma Sankey | Executive Director

### **Administration**

Olikha Mawji\* | Director of Finance & Operations

Wendy Johnston\* | Senior Manager, Finance

Jessica Generalovic\* | Office Manager & Executive Assistant

### **Programming & Learning**

Suzanne Carte | Artistic Director, Curator

Jasmine Mander | Associate Curator

Christine Saly-Chapman | Collections Manager

Stephanie Vegh | Head of Learning

Annie Webber | Education Coordinator

Alisha Ecker\* | Volunteer Coordinator

Heather Kuzyk | Education Studio Technician

Michelle Lynn | Ceramic Studio Technician

Joseph Thomson | Lead Preparator

Chris Blanchenot | Preparator

### **Marketing & Development**

Alex Tindale | Senior Manager, Philanthropy

Sarah Miserere\* | Manager of Development & Communications

Jessica Sutton\* | Engagement Coordinator

Maaiké Bouhuyzen-Wenger | Development Coordinator

Sophia Finelli\* | REVEL Intern

Genevieve Wright | Head of Marketing

Natalia Parraga | Digital Content Producer

Sarah Stone\* | Marketing Intern

### **Enterprise**

Julie Magner | AGB Shop Manager

Rose Divecha\* | Art Sales & Rentals Coordinator

Cathy Neely | Shop Associate

### **Building & Operations**

Emma Goudie\* | Head of Venue Rentals

& Customer Experience

Ashlie Burns\* | Head of Venue Rentals

& Customer Experience

Rollin King | Facility Operator

Jennifer Wales\* | Lead Guest Experience Associate

Bela Botas\* | Guest Experience Associate

Jill Duvnjak\* | Guest Experience Associate

Cheryl James\* | Guest Experience Associate

Nathan Lynn\* | Guest Experience Associate

Ooma Samuel-Walks\* | Guest Experience Associate

Haley Simpson\* | Guest Experience Associate

Jay Stackaruk\* | Guest Experience Associate

Ryan Suitor\* | Guest Experience Associate

Hannah Wong-Duerden\* | Guest Experience Associate

Rhiannon Walker\* | Guest Experience Associate

Migdalia Barrios De Lopez | Lead Custodian

Amanda Scott | Custodial Assistant

*\*refers to members of staff for part of the year*



VOLUNTEER APPRECIATION EVENT, ART GALLERY OF BURLINGTON. 2024. PHOTO CREDIT: NATALIA PARRAGA

## Volunteers

### Programs

Abbey Clarke  
 Abrar Baloch  
 Adeena Irfan  
 Adeife Adedeji  
 Allie Dawe  
 Amirah Bates-Akoush  
 Anahita Mahdavi  
 Andrew Knill  
 Angel Xing  
 Annabelle Barrow  
 Annie Dawley  
 Annie Dywelska  
 Annie Li  
 Anya Bugaisen  
 Anya Garg  
 Araya Cheema  
 Arina Chen

Augustyn Kurpaska  
 Avaanya Garg  
 Ayesha Aibani  
 Aysha Bhabha  
 Brooke Hamilton  
 Camila Rincon-Leon  
 Charlotte Wagner  
 Ciara Rieder  
 Damian Le Blanc  
 Elena Scurtu  
 Elizabeth Pletch  
 Emily Harper  
 Enia Lushaj  
 Fiona Gilroy  
 Gia Buttar  
 Grace Moran Dewar  
 Hamza Fahd  
 Helen Liu  
 Hiroshi Wang  
 Hoda Shaheen  
 Inaaya Farooqui

Isla Noordhof  
 Jack Sephton  
 Jawad Kukjezada  
 Jaylene Virk  
 Julie Lee  
 Kayden George  
 Kelly Tran  
 Kriti Marupadi  
 Kye Chong Ping  
 Kyra Element  
 Lea West  
 Lok Sze Wong  
 Lucinda Orr  
 Maddison Krajc  
 Matthew Ferrer  
 Meddows Wilkinson  
 Melina Sattari  
 Mina Tran  
 Monica Content  
 Morgan Lawson  
 Naina Dhulipati

Natalie Hanly  
Nathan Danek  
Nicole Huang  
Patrick Ouyang  
Phil Skrins  
Rachel Xin  
Reeva Jiyani  
Ren Calderon  
Ronin Sodhi  
Ryan Tao  
Saba Sameti  
Sahasra Penumadu  
Sama Augla  
Samantha Salamé  
Shivani Tailor  
Sophia (Mars) Ruttan  
Sophia Hang  
Tanya Ternovska  
Valeria Namuche  
Wyatt Hamilton  
Yanelle Marroquin  
Zayan Riaz

**Conservatory & Courtyard**

Adrian Markowiak  
Fred Segato  
Jill Attack  
Len Collins  
Michelle Bennett  
Nesli Pakkal  
Peter Simmelink  
Peter Zevenhuizen  
Sheila Segato  
Sue Lathan

**AGB Shop**

Anne Rogers  
Barbara Krukowski  
Bev Douglas  
Catherine McMenemy

Catherine Thomson  
Cathy Neely  
Christina Moskal  
Georgia Drevjany  
Isabelle Snider  
Jane Lonergan  
Joan DeLuca  
Joan LaSalle  
Kathy May  
Leslie Corbet  
Liz Charlebois  
Liz Astrom  
Marlina Oliveria  
Mary Brierley  
Mary Kretz  
Matthew Xagoraris  
Melita Aquilina  
Olivia Montague  
Onna Erstikaitis  
Saida Mosna  
Sharon Collins  
Sharron Thatcher  
Sheila & Fred Segato  
Stella Zemlyak  
Sue Aiken Peacock-Snider  
Tyler Smith  
Wendy Hall

**Special Events & Education**

AJ Skirving  
Akinyemi Adetunji  
Ana Lucia Millan  
Barbara Norman  
Barbara Reade  
Chinenye Kalu  
Elijah Gransauil  
Jenna Wathier  
Jherson Chiroque  
Karen Harris  
Karen Logan

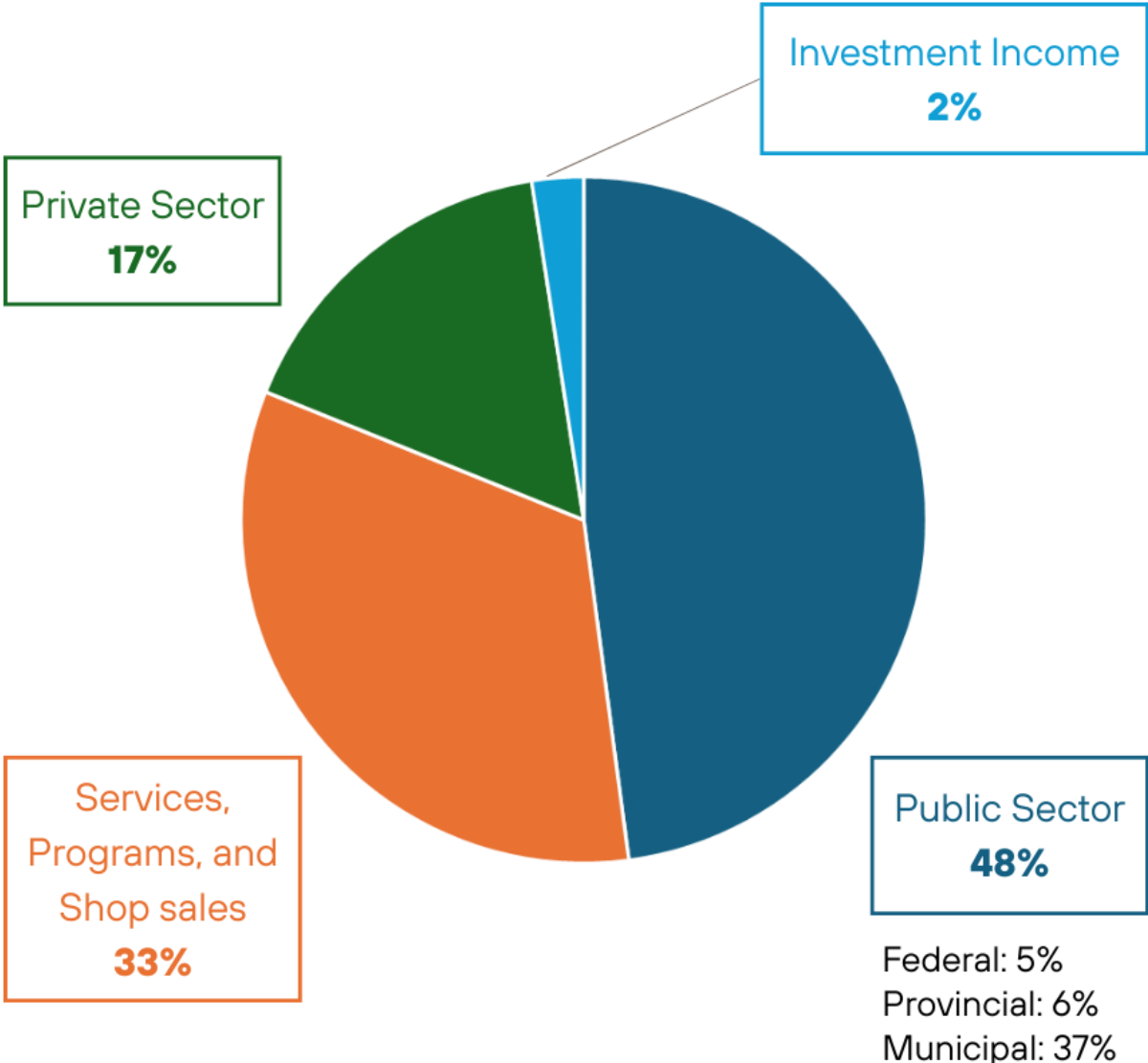
Kate McColl  
Lauren Church  
Linda Klein  
Louise Donnelly  
Meave Nowitsky  
Michael Maiesciuk  
Nikky deBoer  
Shelley Wettlaufer  
Sue Hill  
Suzen Van Geyn  
Sylvianne Kohl  
Teresa Hurd  
Yasmin Mayer  
Zachary Smajilovi

# Financials

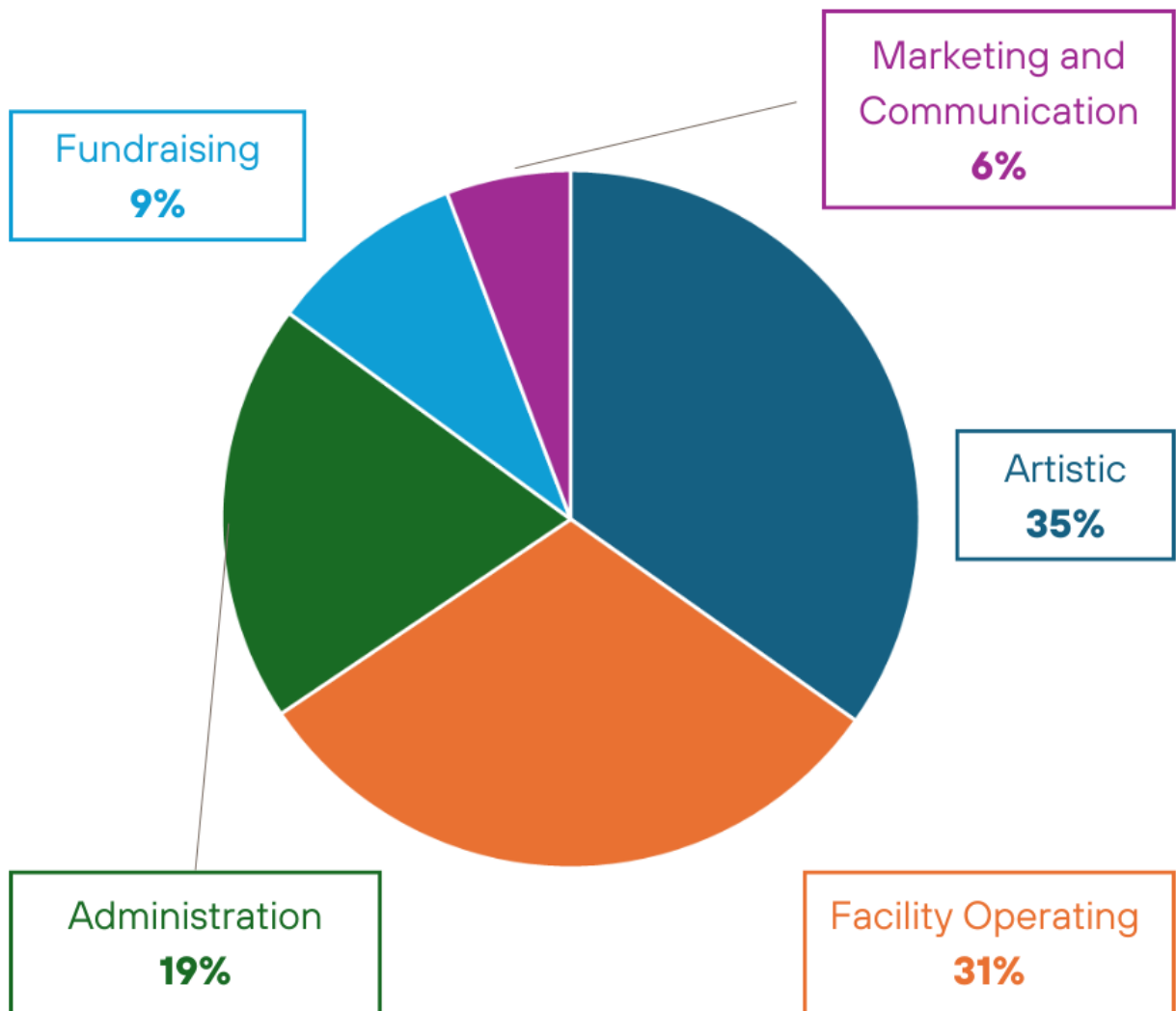
In 2024, thanks to the generous support of our community, the Art Gallery of Burlington brought in **\$2.88 million in total revenue**, with strong contributions from the public and private sectors, as well as income from programs, services, and investments. We directed these funds into impactful

areas—nearly **\$1 million toward artistic programming**, alongside investments in operations, fundraising, and outreach. By year-end, we achieved a balanced budget with a modest **surplus of \$11,455**, reinforcing our commitment to financial sustainability while delivering vibrant, accessible arts experiences.

## Revenue: \$2,882,011



## Expenses: \$2,870,556





**ART GALLERY OF BURLINGTON**

1333 Lakeshore Road,  
Burlington, ON L7S 1A9  
905.632.7796  
info@agb.life

**agb.life**

CHARITABLE REGISTRATION NO: 106818925 RR 0001